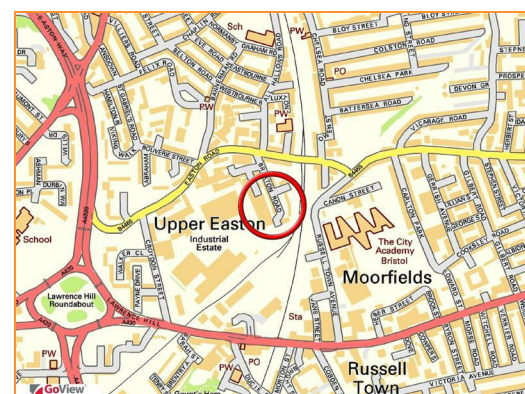
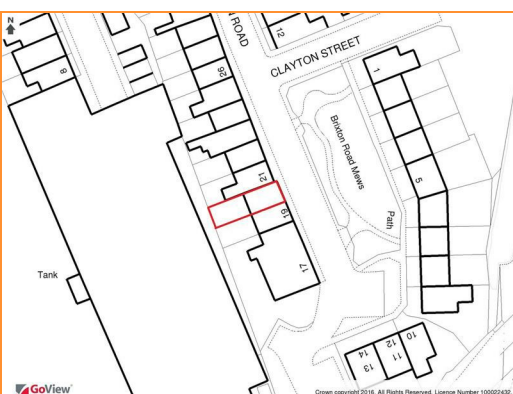




**20 Brixton Road, Easton, Bristol, BS5 0EN**

**Sold @ Auction £170,000**

Hollis Morgan APRIL AUCTION LOT NUMBER 19 - A mid TERRACED PERIOD property ( 694 Sq Ft ) arranged over two floors with enclosed REAR GARDEN and now in need of COMPLETE UPDATING



# 20 Brixton Road, Easton, Bristol, BS5 0EN

## FOR SALE BY AUCTION

SOLD @ AUCTION £170,000  
GUIDE PRICE £140,000  
APRIL AUCTION TOTAL SALES £8.5m

LOT NUMBER 19  
Wednesday 20th April 2016  
All Saints Church Pembroke Road, Clifton, Bristol BS8 2HY  
Legal packs will be available for inspection from 18:00.  
The sale will begin promptly at 19:00

## THE PROPERTY

A two bedroom mid terrace period property ( 694 Sq Ft ) with rear garden in need of modernisation.

## LOCATION

Brixton Road is located within the vibrant suburb of Easton and boasts excellent transport links with both the M32 motorway network and Lawrence Hill roundabout nearby providing fast and direct routes out of Bristol. Bristol City Centre and Cabot Circus are within two miles

## THE OPPORTUNITY

The property now requires complete modernisation but would make a fine family home or investment in this highly sought after location.

## RENTAL APPRAISAL

The local lettings experts say:  
The Bristol Residential Letting Co. is confident this property would make a good rental investment. Don McKeever of The Bristol Residential Letting Co suggests a rent in the region of £825 - £875pcm will be achievable if refurbished for the professional market. If you would like to discuss more detail on the potential for rental, you can call Don (0117 370 8818) for a no obligation discussion. He will be very happy to advise on maximising the return on this property.

## ACCOMMODATION

### GROUND FLOOR

Hallway  
Reception room  
Kitchen  
Cloakroom

### FIRST FLOOR

Bedroom 1  
Bedroom 2  
Bathroom

### OUTSIDE

Rear garden

## EPC

For full details of the EPC please refer to the online legal pack.

## BUYER'S PREMIUM

Please be aware all purchasers are subject to a £750 + VAT buyer's premium which is ALWAYS payable upon exchange of contracts whether the sale is concluded before, during or after the auction date.

## GUIDE PRICE

An indication of the seller's current minimum acceptable price at auction. The guide price or range of guide prices is given to assist consumers in deciding whether or not to pursue a purchase. It is usual, but not always the case, that a provisional reserve range is agreed between the seller and the auctioneer at the start of marketing. As the reserve is not fixed at this stage and can be adjusted by the seller at any time up to the day of the auction in the light of interest shown during the marketing period, a guide price is issued. This guide price can be shown in the form of a minimum and maximum price range within which an acceptable sale price (reserve) would fall, or as a single price figure within 10% of which the minimum acceptable price (reserve) would fall. A guide price is different to a reserve price (see separate definition). Both the guide price and the reserve price can be subject to change up to and including the day of the auction.

## RESERVE PRICE

The seller's minimum acceptable price at auction and the figure below which the auctioneer cannot sell. The reserve price is not disclosed and remains confidential between the seller and the auctioneer. Both the guide price and the reserve price can be subject to change up to and including the day of the auction.

## AUCTION BUYERS GUIDE VIDEO

We have short video guides for both buying and selling by Public Auction on the Hollis Morgan Website. If you have any further questions regarding the process please don't hesitate to contact Auction HQ.

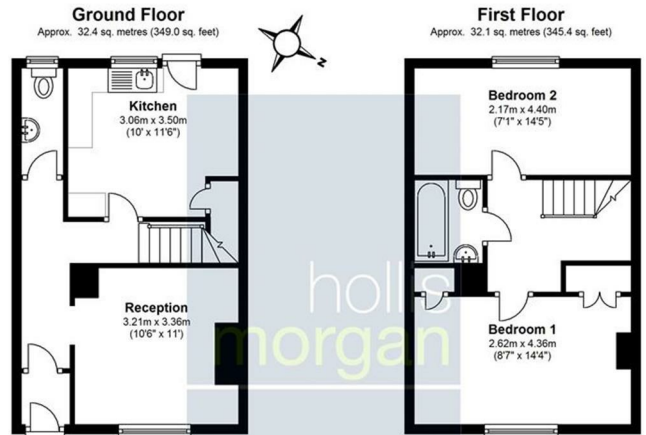
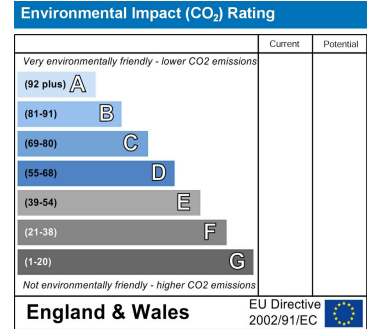
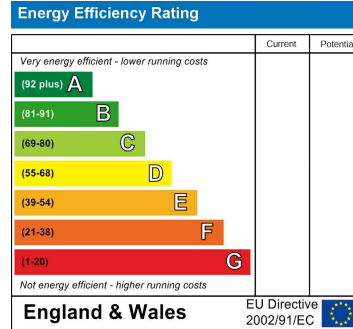
## TESTIMONIALS

We are very proud of what our past clients have say about us - please visit the Hollis Morgan website to read their testimonials.

## CHARITY OF THE YEAR

Hollis Morgan are supporting Home Start Bristol as our 2016 Charity of the year. We are delighted to

announce that 10% of every buyer's premium will be donated to this excellent local charity – Home-Start Bristol provides a unique kind of help which has a profound impact on struggling families with young children, 98% of those who finished a period of support reported that their wellbeing had increased. If you would like to find out more about Home-Start Bristol and how you can support us please visit our website [www.homestartbristol.org.uk](http://www.homestartbristol.org.uk)

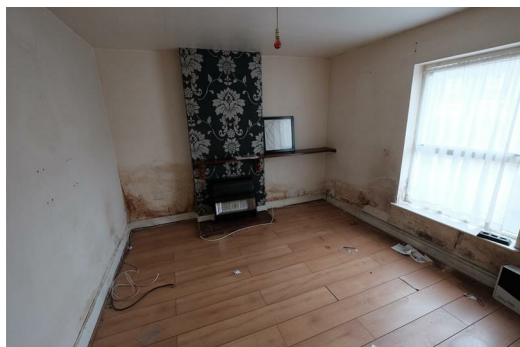


Total area: approx. 64.5 sq. metres (694.4 sq. feet)

Illustration for identification purposes only, measurements are approximate, not to scale.

Floorplan Produced by Westcountry EPC  
Plan produced using PlanUp.

20 Brixton Road, Bristol



e-mail: [post@hollismorgan.co.uk](mailto:post@hollismorgan.co.uk) [www.hollismorgan.co.uk](http://www.hollismorgan.co.uk)

9 Waterloo Street, Clifton, Bristol BS8 4BT. Telephone: 0117 973 65 65

Hollis Morgan Property Limited, registered in England, registered 7275716. Registered address, 5 Upper Belgrave Road, Clifton, Bristol BS8 2XQ